

The ÖTZTAL NATURE PARK looks forward to organizing guided theme hikes!

Contact



ÖTZTAL NATURE PARK  
Nature Park House, Oberlängenfeld 142 • A-6444 Längenfeld  
T +43 5256 20201 • info@naturpark-oetztal.at • www.naturpark-oetztal.at

Imprint

Editor ÖTZTAL NATURE PARK  
Texts Kathrin Amprosi, Thomas Schmarda  
Layout Agentur Web-Style  
Photos Archiv NATURPARK ÖTZTAL, Anton Vorauer, Bernhard Plattner (Howdy), Jakob Abermann, Jochl Grießer, Kathrin Amprosi, Robert Mühlthaler, Thomas Schmarda, Walter Falkner, Werner Schwarz, Hansjörg Fiegl, Ötztal Tourismus - Isidor Nösig, Rudi Wyhlidal  
Maps ÖK200: „Bundesamt für Eich- und Vermessungswesen“ Vienna, permit number 70303/96, ATLR

Disclaimer of liability: All data given was collected accurately but no liability is assumed for the correctness of information. No responsibility is accepted for subsequent accidents or damages caused by the use of this flyer. Typesetting errors and misprints excepted.



Nature Park Insight

www.naturpark-oetztal.at



MIT UNTERSTÜTZUNG VON LAND UND EUROPÄISCHER UNION



The European Agricultural Fund for Rural Development: Europe investing in rural areas.



Getting here by public bus or train: Ötztal Bahnhof train station – then by bus to Ötztal.

Further information at [www.vvt.at](http://www.vvt.at) or „Ötztaler Verkehrsgesellschaft“ bus line [www.oetztaler.at](http://www.oetztaler.at), Phone +43(0)5254 3550.

ÖTZTAL NATURE PARK - A Short Profile

The ÖTZTAL NATURE PARK is the organization responsible for the conservation of all environmentally protected areas in the Ötztal. The protected 508 km² area stretches from the valley floor up to high Alpine glacier regions. Its highest point is Ötztal’s Wildspitze peak at 3.774 m above sea level.

The ÖTZTAL NATURE PARK comprises a number of almost untouched, protected mountain areas characterized by fascinating Alpine landscapes and ample glacier regions: nature preserves in the Ötztal Alps (also EU-protected Natura 2000 Area) and Stubai Alps, Engelswand Rock Face preserve and Piburger See-Achstürze region. The areas Obergurgl’s Stone Pine Forest, Rauher Bichl landscape and the area surrounding the huge Tschirgant Rockslide are currently not integrated in the ÖTZTAL NATURE PARK but aims to become a part of it.

ÖTZTAL NATURE PARK Association

The management of the ÖTZTAL NATURE PARK resides with the Association of the same name and has its headquarters in Obergurgl. Among the Association’s members are the six Ötztal villages of Haiming, Sautens, Oetz, Umhausen, Längenfeld and Sölden as well as Ötztal Tourismus, three Ötztal departments of the Austrian Alpine Club, the Austrian Federal Forestry Office and the National Authority of Tirol.

Aims and goals

The 5 main aims of the ÖTZTAL NATURE PARK are to preserve nature and landscapes, increase recreational values and tourism in close touch with nature, promote environmental awareness, scientific research and regional development.

ÖTZTAL NATURE PARK - Goals



Everyday work in the Nature Park focuses on these five highly important pillars - comprising also varied projects, promotions and activity programs for all ages.

Tschirgant Rockslide



At the entrance to the Ötztal Valley you find the unique Tschirgant Rockslide Nature Preserve founded in 2009.

Scenic „Forchet“ (in Ötztal dialect: „Farchat“) is a wood-covered rockslide area which has remained almost untouched over the last millennia. An unspoilt nature island right at the heart of the man-made landscapes of the lower Ötztal. The rockslide is dating back some 3000 years.

Walkers can explore the huge Alpine landslide area along a varied theme trail featuring information panels.



Achstürze - Piburger See Preserve



The entire Ötztal is characterized by rock and glacier slides. Lake Piburger See and the Achstürze area near Oetz were also formed by a post-glacial rockslide about 10.000 years ago.

Still today, countless boulders remind us of long past times, for example the boulder-strewn forest around lake Piburger See and next to the Achstürze area, strongly influenced by the powerful waters of the Ötztaler Ache mountain brook.



Engelswand Rock Face



The steep Engelswand Rock Face resembles a mighty wall towering above the hamlet of Platzl/Lehn in Umhausen. This fabulous nature preserve, awarded „Nature 2000 Area“ by the European Union, stands for an unrivaled habitat of rare Alpine fauna and flora. An infinite number of small terraces and crevasses in the rock wall offer perfect living conditions.

At the heart of Umhausen’s lush valley floor you find a small, wooded hill: „Rauher Bichl“ – an environmentally protected zone – is synonymous with wilderness amidst the man-made landscape.



Stubai Alps



Horlachtal, Sulztal, Windachtal – promising names for passionate nature explorers. Not without reason the Stubai Alps Protected Area is widely known for its wilderness and unspoilt high Alpine landscapes. Ancient stone pine trees can be found in the Windachtal Natural Forest, as well as dwarf bushes, Alpine heathlands covered with grass, splendid rock and glacier formations. It also makes a perfect place for scientific studies. Schrankogel in Sulztal, for example, has become an important international research base focusing on climate change and its consequences.



Obergurgl Stone Pine Forest



The Stone Pine Forest in Obergurgl ranks among the most renowned Nature Treasures, located in the „Brenner“ region south of Obergurgl. The region has a young stone pine population and age-old „weather pines“ which survived the huge forest fire around 1880 AD. At the heart of the Stone Pine Forest there is the superb Stone Pine Moor dating back to the Ice Ages. Over millennia, the glaciers have formed a huge trough covered with peat. Today, important information about wood types and flower pollen can still be found in this ancient peat layer. A special ÖTZTAL NATURE PARK Theme Trail – „have a chat with a crack(er)“ symbolized by a jaybird – takes walkers on a scenic tour through the Stone Pine Forest towards picture-book Rotmoostal and quaint Schönwieshütte.



Ötztal Alps



The highest summits of the mighty Ötztal Alps nestle amid the marvelous Nature Preserve of the same name, awarded „Natura 2000 Area“ by the European Union. Among the most popular three-thousand meter peaks ranks the Wildspitze summit, encircled by huge glacier fields. The whole upper Ötztal is one of the Central Alps’ most researched mountain areas with a highly renowned Alpine Research Center in Obergurgl. This area of awesome natural beauty has always been an important living space, which is proven by the finding of „Ötzi“ (Glacier Mummy) and manifold other high Alpine archaeology studies.



ÖTZTAL NATURE PARK - Good to Know

Guided natural history tours, expert lectures and varied other events are scheduled throughout the summer and winter seasons. For more detailed information on highlights, event series, nature preserves, theme hiking trails, signposted walking routes, Nature Park brochure orders or downloads etc. take a closer look at:

[www.naturpark-oetztal.at](http://www.naturpark-oetztal.at)

The ÖTZTAL NATURE PARK team looks forward to organizing guided theme hikes like nature study tours or culture and history walks.

Membership

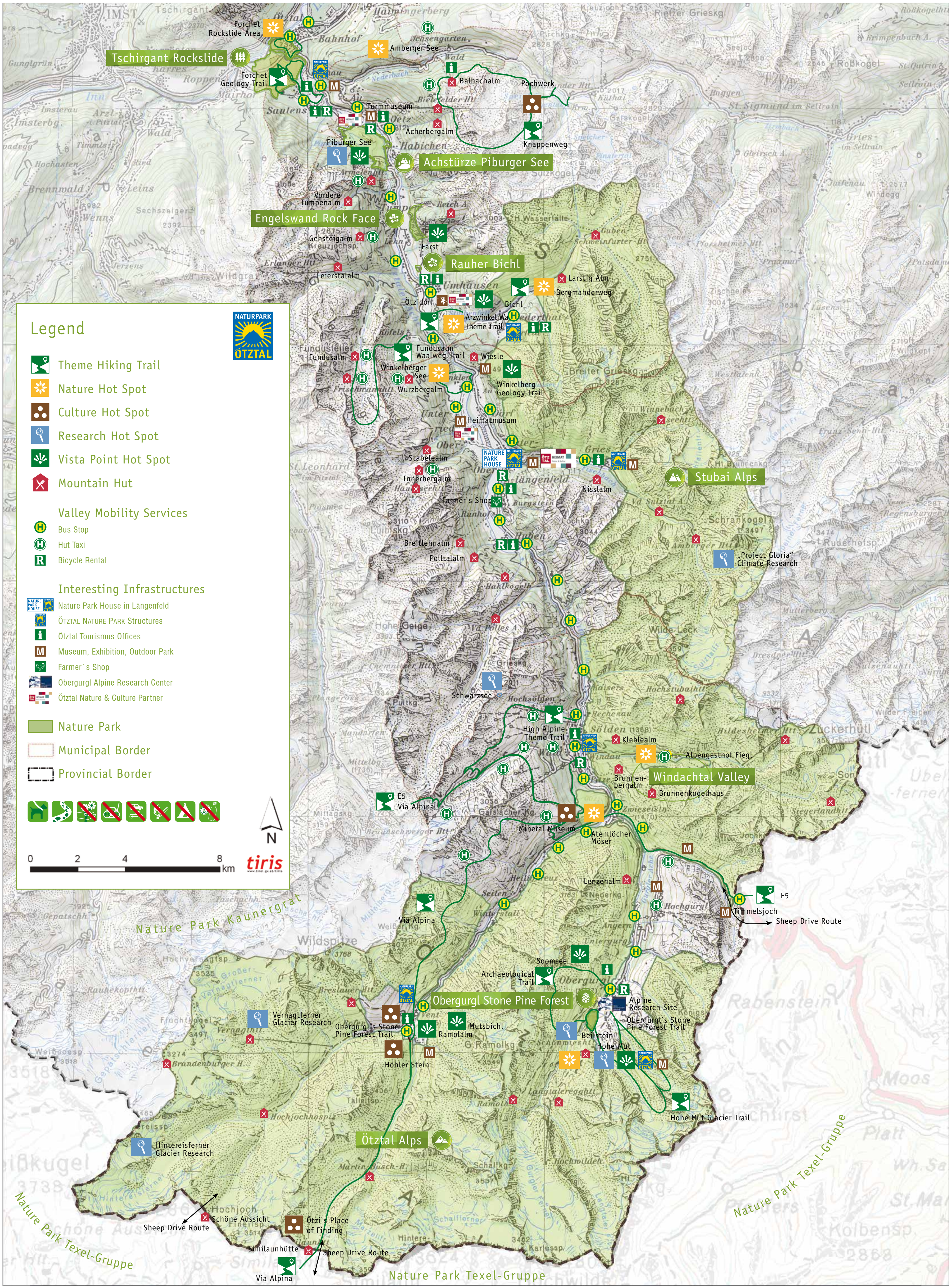
As a supporting member you sustain the work of the ÖTZTAL NATURE PARK!

Advantages for members: reduced admission to Nature Park Events, latest news and information on all Nature Park activities, use of photo and literature archives, new brochures/publications for free

Membership Fees:	
• Single person	Euro 15.00/year
• Clubs, small enterprises	Euro 50.00/year
• Business enterprises	Euro 100.00/year

Become a member





Legend



- Theme Hiking Trail
- Nature Hot Spot
- Culture Hot Spot
- Research Hot Spot
- Vista Point Hot Spot
- Mountain Hut

Valley Mobility Services

- Bus Stop
- Hut Taxi
- Bicycle Rental

Interesting Infrastructures

- Nature Park House in Längenfeld
- Ötztal Nature Park Structures
- Ötztal Tourismus Offices
- Museum, Exhibition, Outdoor Park
- Farmer's Shop
- Obergurgl Alpine Research Center
- Ötztal Nature & Culture Partner

- Nature Park
- Municipal Border
- Provincial Border



0 2 4 8 km

tiris